

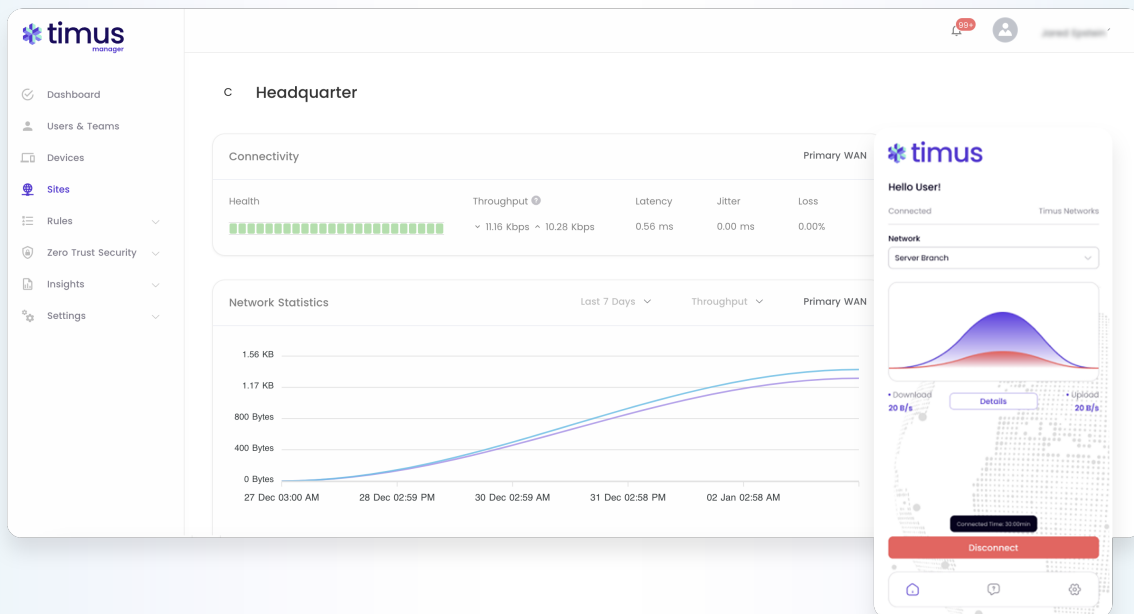


ZERO TRUST NETWORK PROTECTION

Redefine How You Work. Always-On Connectivity.



Remote access made simple. Stay connected & protected while working from anywhere.



Open your device and go.

Access corporate data and your SaaS apps while on the go without the worry of insecure networks & bad actors breaching your information.

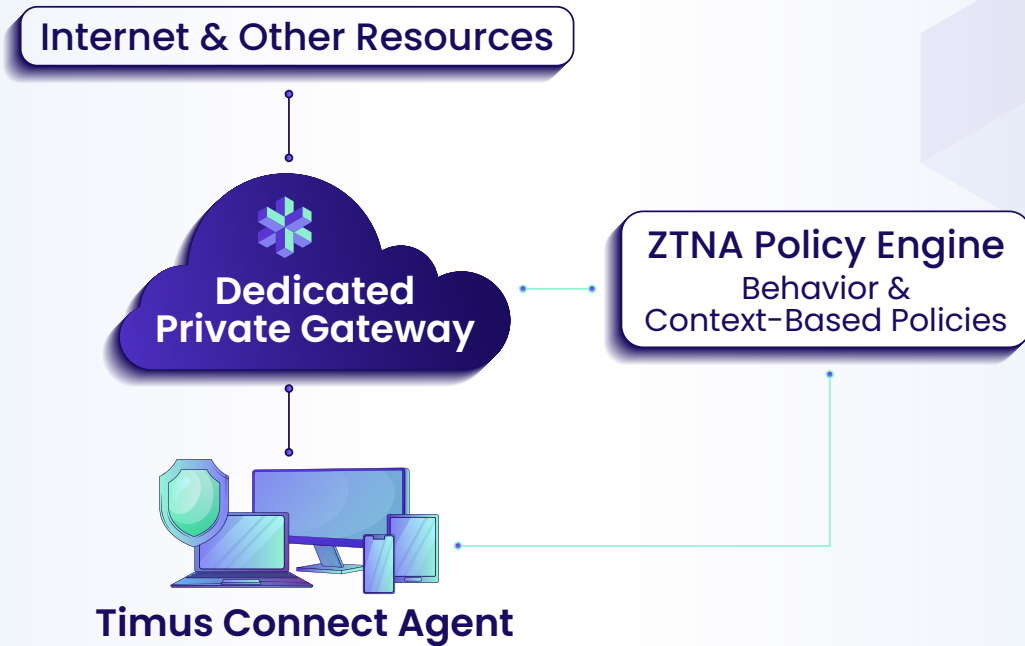
Uncompromised network speeds backed by state of the art global infrastructure.

Intelligent identity-based protection. Timus ensures that bad actors cannot weaponize your credentials.

Multi-factor authentication based on your risk level.

- New Device? New Country? Untrusted Wifi?

Network security is no longer isolated to the walls within the office.

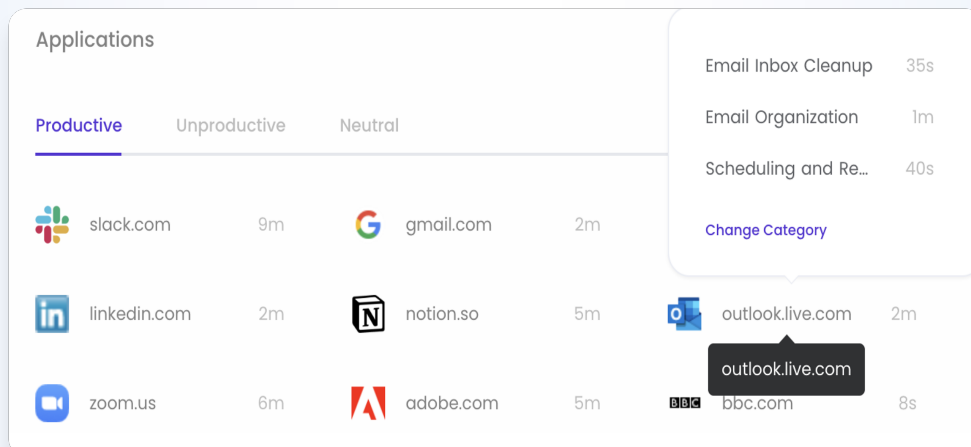


Minimize your risk. Maximize productivity.

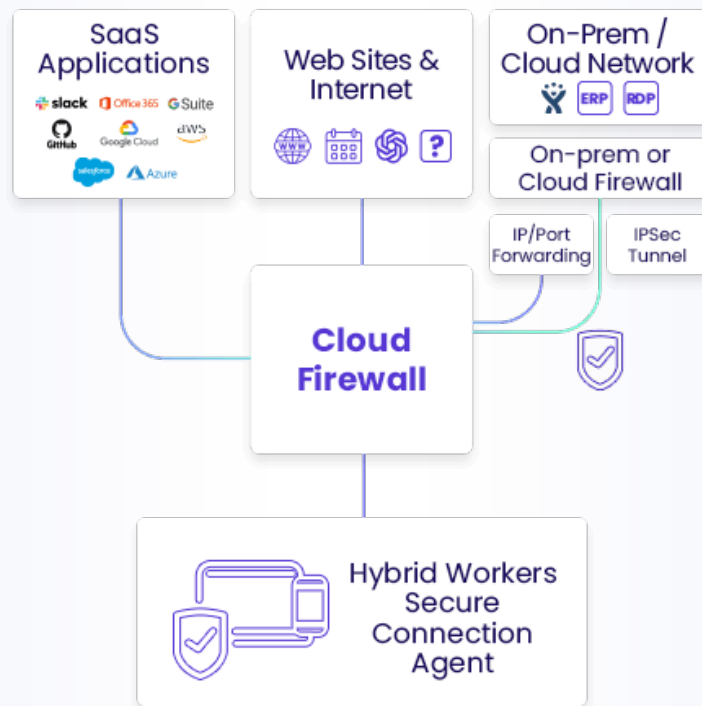
Timus' secure web gateway ensures users can browse the web safely. Malicious sites, files & downloads are restricted by default.

<input type="checkbox"/>	T Development	→ cannot access	→ A Any	→ W facebook.com
<input type="checkbox"/>	T Marketing	→ cannot access	→ A Any	→ C Social Networks
<input type="checkbox"/>	S Office - Gene...	→ cannot access	→ A Any	→ C Criminal Activities

Gain insights into key metrics via Productivity Insights. Understand where screen time is being devoted to and how to better maximize your work day.



Correct credentials + No Timus Connect = No access.



Functionality & customization tailored to the needs of your business

Lightweight, OS-agnostic Timus Connect app (Windows, Mac, Android, iOS)

15 minutes to deploy, always-on secure connectivity

Achieve compliance - HIPAA, SOC2, ISO27001, CMMC, FINRA

Retain your username and passwords with **Identity provider integrations**

Automated reports with **actionable insights** provided at intervals of your choosing

The screenshot shows the Timus Connect dashboard. On the left is a navigation menu with items like Dashboard, Users & Teams, Devices, Sites, Rules, Zero Trust Security, Insights, Alerts, Traffic Logs, Events, Automated Reports, Blocked IP Addresses, and Settings. The main content area is divided into three sections:

- Reports:** A table with columns for Title, Type, Status, Template, Period, and Last Run. It lists 'Manager On Demand Report' and 'Daily Report'.
- Sign-In Locations:** A world map with colored circles indicating login activity in various regions like North America, South America, Europe, and Asia. A legend on the right lists categories like Successful Logins, Failed Logins, and High-Risk Login Attempts.
- Identity Provider Integrations:** A grid of cards for Microsoft Entra ID, Okta, Google Workspace, and Active Directory, each with an 'Enable' button.

Built for layered security, on the principles of Zero Trust Network Access, Timus keeps users working from anywhere connected and protected



What are the core features of Timus?

- Zero Trust Network Access, always-on agent
- Adaptive Cloud Firewall
- Secure Web Gateway
- Site-to-site connectivity
- Productivity Tracker

Who benefits from Timus?

- Remote and hybrid workforces
- Business owners, the C-suite, IT professionals & HR teams
- The top & bottom line via
 - Cybersecurity insurance premium reductions
 - Productive & protected users
 - Maximum visibility & control for admins



How does Timus differentiate?

- Timus works exclusively through the MSP channel. Enablement is key
- 100% cloud based. No infrastructure adjustments required. Deploy in less than 30 minutes
- Complimentary white-glove onboarding & dedicated 24/7 support team
- Lightning speeds built on global high availability infrastructure